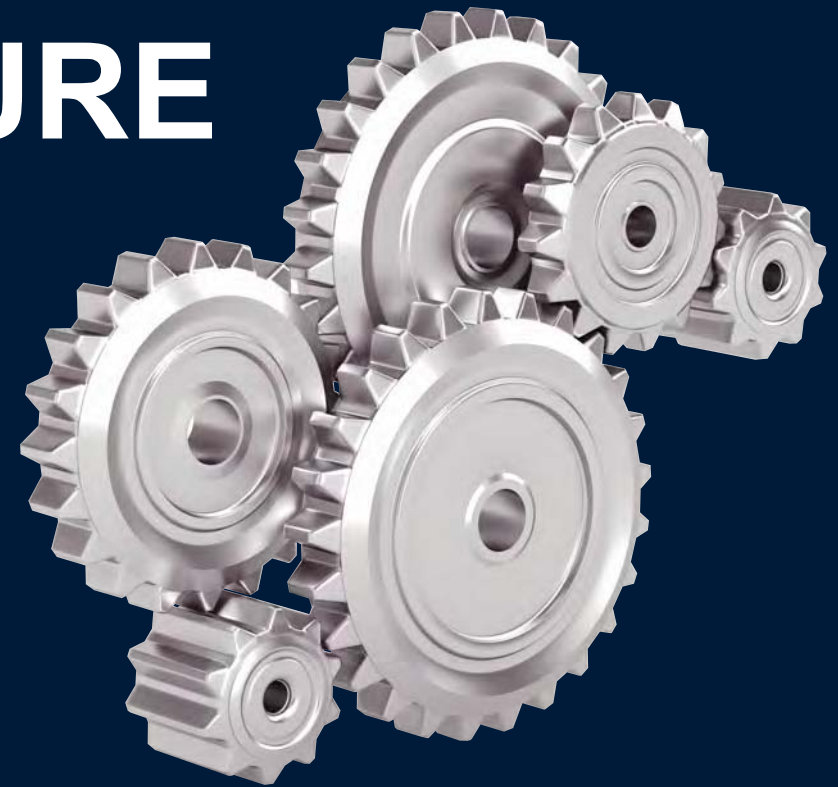


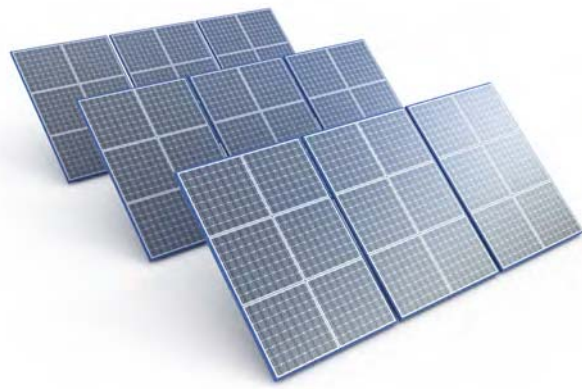
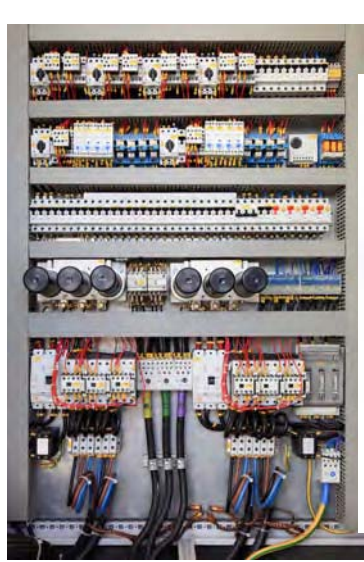
GOVERNMENT OF GUJARAT APPROVED

SHIV INDUSTRIAL INFRASTRUCTURE PARK



FREE HOLD INDUSTRIAL N.A. PLOT
AT : LAMDAPURA, SAVLI
NEAR G.I.D.C, SAVLI - MAJUSAR - ALINDRA
VADODARA, GUJARAT, INDIA

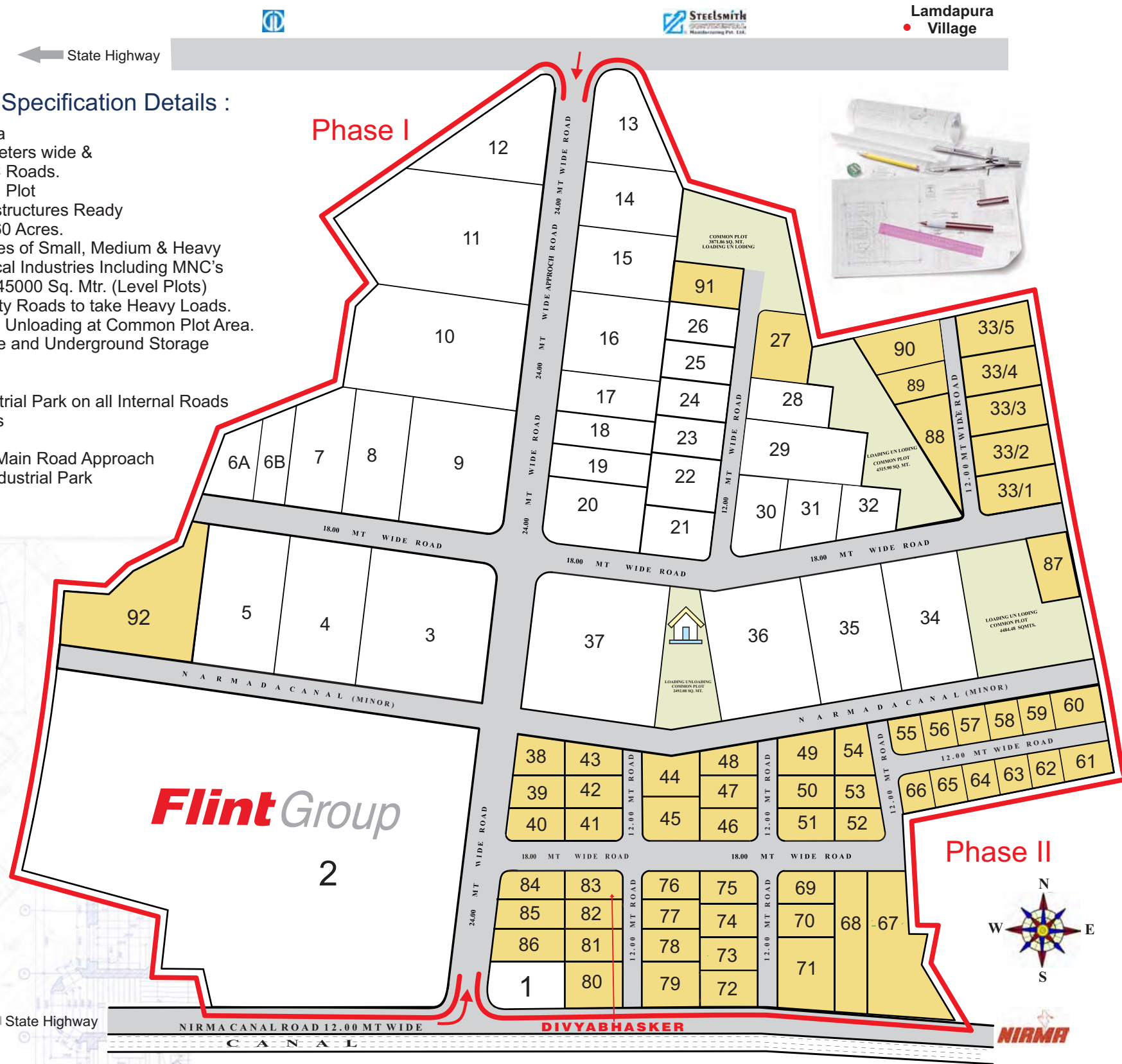
KOCH GLITSCH KUSTER CALICO MACHINERY LTD
MODERN TUBE IND BUNDY DRESSER RAND TOTO HNG
IDEX SABIC GPEL ARZEN HAVER IBAU HEMVIN ELEMALX GAYATRI ENTERPRISE
RISHI LASER BOMBARDIER VASU PEW APPOLO TYRES SUZLON
ITT-XYLEM AXTEL TATA ENTERPRISES TDW NETAFIM SANGHAVI ARCELOR MITTAL
TYCOAPS SEW VOLTAS MODERN DIVYA BHASKARRPG BRAY
VOLTAMPER DAVOITH GMW SCHNEIDER ELECTRIC AREVA
ABB MAN TURBO SMITH ONGC MUNJAL AUTO ORBIT AVID THERMALLOY SPIC
DHAMM CPE KAIZEN JINDAL STEEL (JSL) POLYCAB SUPREME JEWELL
ASTA KEMROCK ANGLE ENGINEERING JBR ASTER EXTRUSION GAMESA
L&T CAST JCT TECHNIC STEEL INDIA ESQUIRE SYNEFRATPI MOFLEX LEAR
TORRECID SETCO BHARMANI FERBRICATERS IOL ELECTROMECH LUCY DB CORPORATION
FLINT GROUP KPES ELCENG GAIL TEADIT
AREVA SPACO DANKE POWER HERO MOTOCORP LTD GUJARAT METAL CAST KEW
STEEL INDIA GM PRIYANK ENGINEERING NETAFIM THERMAX ENPAY
ALSTOM SUNRISE ENGINEERS RATNAVEER CEAT MATRIX GAMMON
INNOVATIVE JALIYANA EQUIPMENT COSMOS BHARAT FORGE PRAYAS ENGG ELECON
M D PHARMA ROTEX MATRIX KIRITI INDUSTRIES CHI - GHI ACCORD FAG RR KABEL
NIRAT STEEL JINDAL AGRO CPP HIMALAYA L & T INFOTECH GAMESA
PANASONIC RAJPUTANA TRINITY INTERNATIONAL PRIYANK ENG SIEMENS HEATRON
ASAL TATA HEMVIN ADVANCE ROOF & BUILDING SYSTEM SEFORGE CONMAT JORD
JALARAM ENTERPRISE GSPC ECOMAN SIDDHARTH KUNKEL WAGNER POLYCAB DR METHA
AKASH GASES FLEXATHERM SHAKUN POLYMER DUPONT POLYCAB DR METHA
TCR ADVANCE TECHNO PRAZISE ENGG SALONI ENGEERING PVT LTD AMERICAN STEEL ROYAL CUSHION NIRMA TBEA PAKONA
INTEGRA INDIA WEATHER FORD INDUS BITUMEN PVT LTD WELTECH INDUSTRIES BELL CERAMICS
NBC BANCO TURNING & TURNING SHREE GANESH ENTERPRISES V EXCEL SPARES SAMIRI EQUIPMENT LAFARGE
PANCHMAHAL STEEL PUCARO JSN ENTERPRISE RIHNE ENGG. - KILBERN RELIANCE KRITON
INDIAN SALES CORPORATEION MANIBHADRA MACHINE TOOLS PVT LTD MODERN FEBRICATORS & ENGINEERS



Amenities & Infrastructure Specification Details :

- » We exclusively provide net plot area
- » Attractive Main Entrance gate 24 Meters wide & 18 Mtr. & 12 Mtr Wide Internal RCC Roads.
- » Free Hold Title Clear Industrial N.A. Plot
- » Industrial Park with Complete Infrastructures Ready
- » Total Area Spread over more than 60 Acres.
- » Phase I already occupied by all types of Small, Medium & Heavy (MSME) Engineering and Mechanical Industries Including MNC's
- » Industrial Plots from 450 Sq Mtr to 45000 Sq. Mtr. (Level Plots)
- » High Quality of Concrete Heavy Duty Roads to take Heavy Loads.
- » Enough Parking Area for Loading & Unloading at Common Plot Area.
- » Water Supply through common bore and Underground Storage Tank for adequate Water supply
- » Strom Water Drain System
- » Street Lights to illuminate the Industrial Park on all Internal Roads
- » Proper Demarcation of all Sub Plots
- » Tree Plantations on Road Side
- » Impressive Entry and Exit on Both Main Road Approach
- » Administrative Building for Entire Industrial Park
- » Information Kiosk and helpdesk
- » Security Gate
- » Onsite First Ad facility

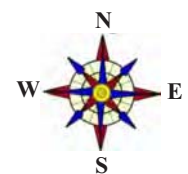
Bank Finance available



Flint Group

2

Phase II



DIVYABHASKER

Landapura Village

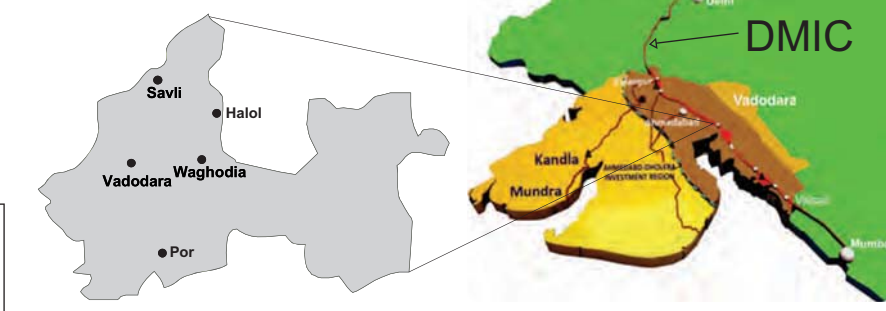


Plot No.	Area in Sq. Mt	Plot No.	Area in Sq. Mt
Phase I		Phase II	
1	1307.56	44	915.40
2	42123.72	45	934.77
3	6549.02	46	695.65
4	4224.97	47	700.00
5	4224.97	48	613.90
6/A	1064.12	49	890.75
6/B	1169.93	50	700.00
7	2490.18	51	695.65
8	2458.42	52	858.89
9	4982.30	53	524.92
10	6795.85	54	661.66
11	7784.59	55	453.85
12	3091.31	56	458.20
13	1980.93	57	458.20
14	2330.29	58	458.20
15	2402.41	59	458.20
16	2401.87	60	716.05
17	2401.34	61	623.46
18	1200.47	62	419.54
19	1200.33	63	430.64
20	2382.51	64	441.75
21	1285.69	65	652.84
22	1391.62	66	459.60
23	1000.00	67	2802.38
24	1000.00	68	1778.20
25	1000.00	69	695.65
26	995.37	70	700.00
27	1356.81	71	1540.57
28	1264.32	72	697.14
29	2506.12	73	700.00
30	1403.76	74	700.00
31	1294.64	75	695.65
32	1063.34	76	590.65
33	SUB PLOT	77	595.00
33/1	1127.34	78	595.00
33/2	1051.66	79	1001.32
33/3	1080.79	80	997.05
33/4	1109.92	81	595.00
33/5	1188.82	82	595.00
34	3699.62	83	590.65
35	3922.25	84	676.26
36	4836.11	85	676.26
37	6961.74	86	748.57
38	699.47	87	955.05
39	664.49	88	1320.36
40	706.56	89	779.02
41	695.65	90	1226.51
42	700.00	91	1075.00
43	639.25	92	4439.89

Distance Table

Approx. Distance From Shiv Industrial Park

	Located on Gujarat State Highway	2.25 KMS
	Vadodara Airport Ahemdabad Airport Mumbai Airport	14 KMS 125 KMS 425 KMS
	International Airport Ahemdabad Airport Mumbai Airport	125 KMS 425 KMS
	Inland Container Depot (icd/cfs) Dashrath	20 KMS
	Delhi Mumbai Corridor Ahemdabad-Mumbai H/W	11 KMS
	Vadodara 3* 4* 5* Hotel	18 KMS
	Vadodara Railway Station	18 KMS
	Vadodara Bus Depot	18 KMS
	Education	12-20 KMS
	Hospital (108)	10 KMS
	Gujarat Port Dahej Port Hazira Port Pipavav Port Kandla Port Mudra Port	150 KMS 195 KMS 340 KMS 400 KMS 450 KMS
	Mumbai Port Jnpt Port Nhava sheva Port	480 KMS 485 KMS
	Sanand (Ahmedabad)	125 KMS
	HALOL - KALOL	25 KMS



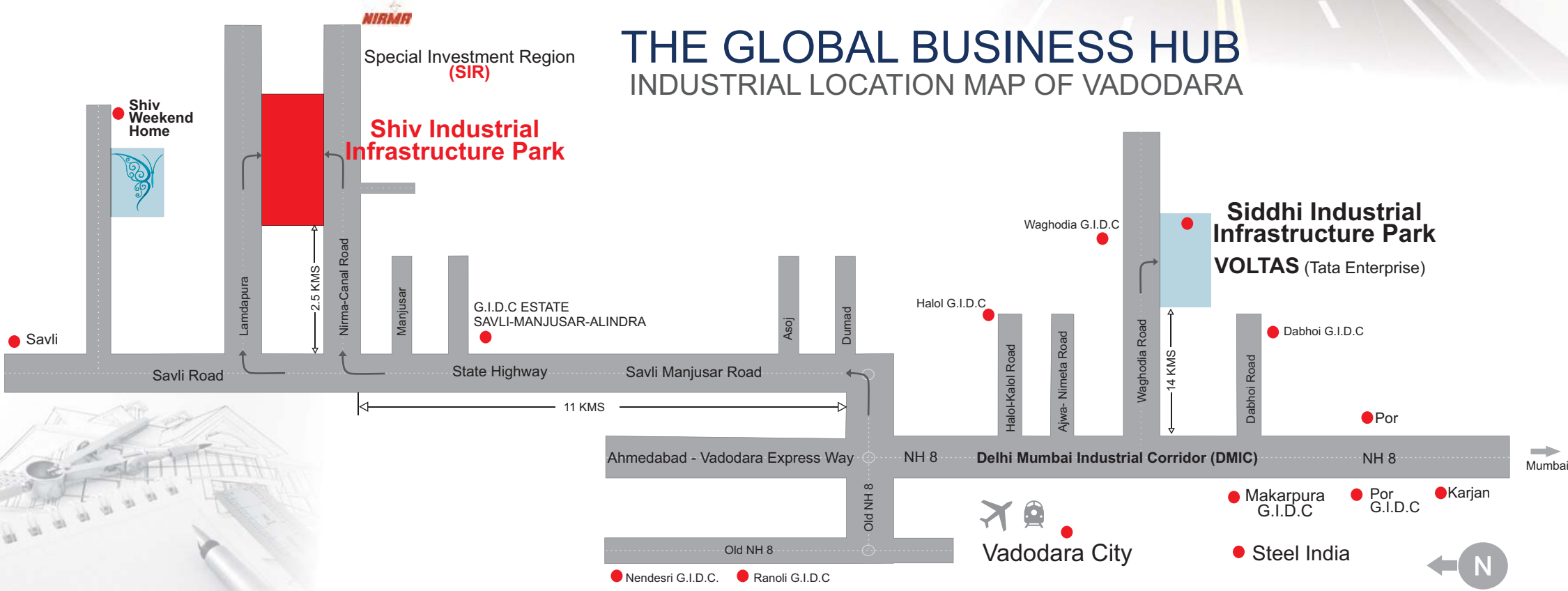
#DMIC#

- DMIC : A high impact industrial area within 150 kms distance on both sides of DFC (Dedicated Freight Corridor)
- 24 Industrial nodes along the DMIC
- 6 nodes in Gujarat
- A Global Manufacturing and Trading Hub - "The engine for economic resurgence of the country."
- Supported by world class infrastructure & policy framework



ADVANTAGES

- » Bank Finance available
- » Invest in infrastructure ready plots
- » Subsidy available on Stamp Duty Registration fees
- » Access to a skilled & growing workforce made up of blue & white color workers
- » Interest subsidy on Land & Building, Plant & Machinery, R & D Center, Quality Certifications etc. under the MSME Act on Industrial & Service activities
- » F.S.I. for Building construction 1.20% on total plot area - Permissible Ground floor 40% of plot
- » Build your own factory, start a new industry, expand your existing unit or just lease a purpose built Factory/Warehouse in the eco-friendly environment
- » Excellent external linkages to National & State Highways, Delhi Mumbai Industrial corridor (DMIC) and on Nearest location to Dedicated Freight Corridor (DFCC)
- » Key centers access including Domestic & International Airports, inland container depot & ports
- » Prospects for long term business growth being part of India's fastest growing industrial belt
- » Construction Facilities Available from our Organizations Expert Architect & Engineers
- » Fast developments approvals of all projects as part of the most proactive Government of Gujarat
- » Neighbors to premium industrial estates like Savli – Manjusar (Alindra), Halol – Kalol, GIDC Waghodia, Ranoli – Nandeshwari, Makarpura – Vadodara, Por – Ramangamdi, Dabhoi, Por – Karjan National Highway NH-8



M.O.U with Government of Gujarat in Vibrant 2011 summit



<p>SHIV INDUSTRIAL INFRASTRUCTURE PARK (સાધુ ત્રિશી મહાત્મ્ય ઉદ્યોગ શાખા) મકારપુરા ઇન્ડસ્ટ્રિયલ એસ્ટેટ વી.સી.સી. બિલ્ડિંગ, મકારપુરા, વડોદરા-૩૯૦૦૧૦ ફોન: (૦૨૬૫) ૨૬૪૭૪૧૦, ૨૬૩૮૨૩૫ ફેક્સ: (૦૨૬૫) ૨૬૩૫૨૬૬, ઈ-મેલ: MAKBRAN ઈ-મેલ: sbi.01456@sbi.co.in</p>	<p>મકારપુરા સ્ટેટ બેંક (સાધુ એન્ડ મેડિયમ ઇન્ડસ્ટ્રી સેક્ટર) મકારપુરા ઇન્ડસ્ટ્રિયલ એસ્ટેટ વી.સી.સી. બિલ્ડિંગ, મકારપુરા, વડોદરા-૩૯૦૦૧૦ ફોન: (૦૨૬૫) ૨૬૪૭૪૧૦, ૨૬૩૮૨૩૫ ફેક્સ: (૦૨૬૫) ૨૬૩૫૨૬૬, ઈ-મેલ: MAKBRAN ઈ-મેલ: sbi.01456@sbi.co.in</p>	<p>SME Branch Makarpura Industrial Estate, V.C.C.I. Building, Makarpura, Vadodara-390010 Tel. : (0265) 2647450, 2638435 Fax: (0265) 2635217, Telegram: MAKBRAN E-mail: sbi.01456@sbi.co.in</p>
---	---	--

Date: 01/08/2012

Certificate

This is to advice that M/s Shiv Industrial Infrastructure Park a Partnership Unit is engaged in construction of Industrial Park. The proposed site is located at Phase-I, at village Lamdapura, Nirma-Canal road, Near GIDC, Manjusar-Alindra, Tal- Savli, District Vadodara.

State Bank of India, SME Makarpura I.E. Branch Vadodara may finance to entrepreneurs for construction of Factory shed and Purchase of New Machinery, subject to viability, feasibility of the project and completion of other legal formalities.

ફોર સ્ટેટ બેંક ઓફ ઇન્ડિયા
 For STATE BANK OF INDIA
(Signature)
 Chief Manager, SME Br. Mak.I.E., Vadodra

SME Branch
 Makarpura Industrial Estate
 Vadodara



Interactive session with Gujarat's Honorable Chief Minister Mr. Narendra Modi, in Vibrant Gujarat Summit for the growth of Industrial Park of Vadodara.

ICICI Bank Loan Available

GOVERNMENT OF GUJARAT APPROVED

SHIV INDUSTRIAL INFRASTRUCTURE PARK

At: Village – Lamdapura, Nirma-Canal Road,
Near G.I.D.C, Savli - Manjusar - Alindra
Tal.-Savli,Pin - 391775, Dist. Vadodara
Gujarat, India

www.shivindustrialpark.com
info@shivindustrialpark.com

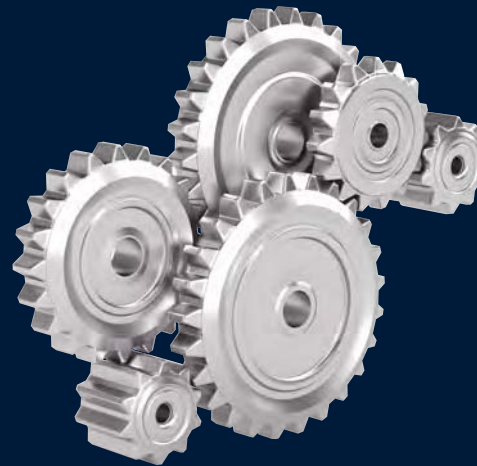
Kirit Vadalia
+91 98240 24786

STEEL INDIA

Office : 899/4, GIDC Estate, Makarpura,
Vadodara - 390 010, Gujarat State, India
Contact : +91 265 2630 786 - 2644 786

Web : www.steelindia.com
Email : info@steelindia.com

Shree B. R. Patel Corporation Group



Shiv Weekend Home

At : Paldi Tundav-Samlaya/Jarod-Halol Road
Tal: Savli, Vadodara, Gujarat
www.shivweekendhome.com
info@shivweekendhome.com

Siddhi Industrial Infrasturcture Park

Opp Waghodia G.I.D.C., Near GEB Substation
Vadodara, Gujarat
www.siddhiindustrialpark.com
info@siddhiindustrialpark.com

Disclamer :

» The Developers reserve the full rights to make any additions, alternation and amendments for changes in plan and specifications that might be necessary from the to time » This Documents is not a Legal Documents and cannot form part of charges, Industrial co-op Society Charges, Common Maintenance Deposit, MGVC (GEB), service Tax and All other Govt. or Semi Govt. Taxes shall be extra at Actual. (IfApplicable). » All Visuals Shown in the Catalogues / Brochures are as Designers Representation and are subjects to charges as per requirements. All Dimensions data are based on theoretical drawings and actual dimensions at site may vary acceptable limits. » Refund in case of cancellations will be made within 30 days from the date of booking of new client only » Administrative expense of 25,000.00 will be deducted from refund amount. (Subject to Vadodara Jurisdiction only) » Payment in favor of "SHIV INDUSTRIAL INFRASTRUCTURE PARK"