

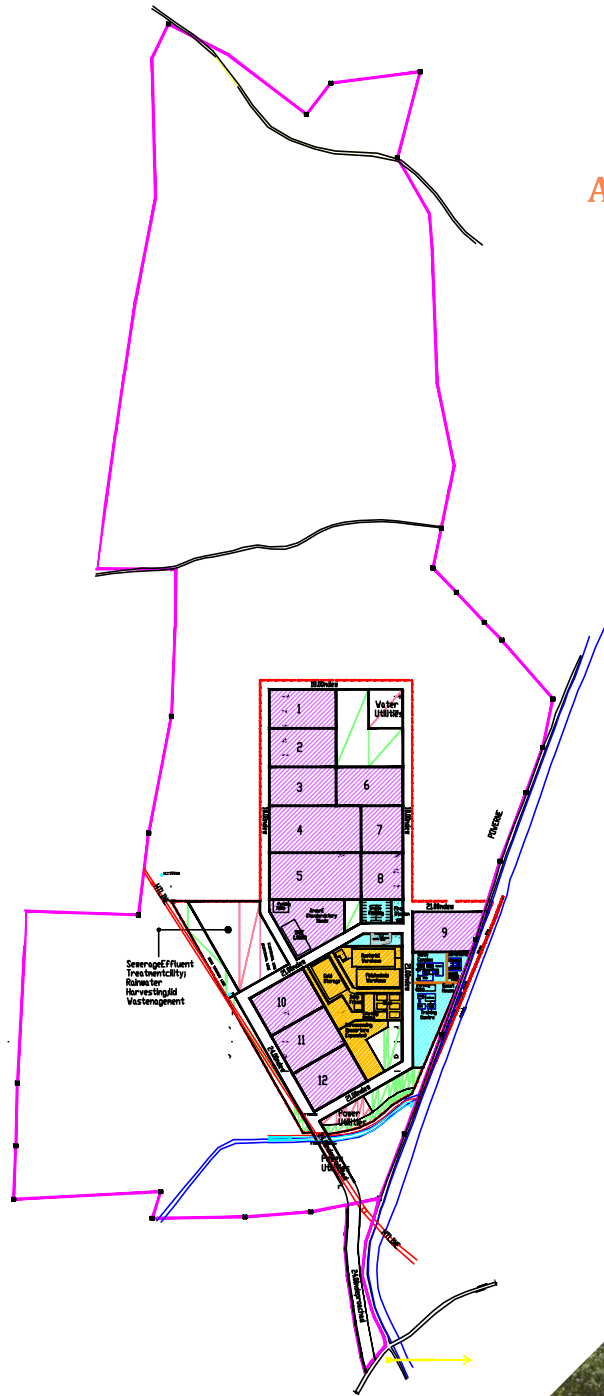
India's Smartest Integrated  
Food Processing Industrial Hub



Developed by  
**Smart Agro Industries Corporation**  
Nandipet, Nizamabad, Telangana



# SMART AGRO INDUSTRIES CORPORATION



## Approx distance from key locations

|           |   |       |
|-----------|---|-------|
| NH-7      | - | 22km  |
| NH-222    | - | 14km  |
| NH-16     | - | 16km  |
| Nizamabad | - | 20km  |
| Armoor    | - | 16km  |
| Nanded    | - | 70km  |
| Hyderabad | - | 200km |

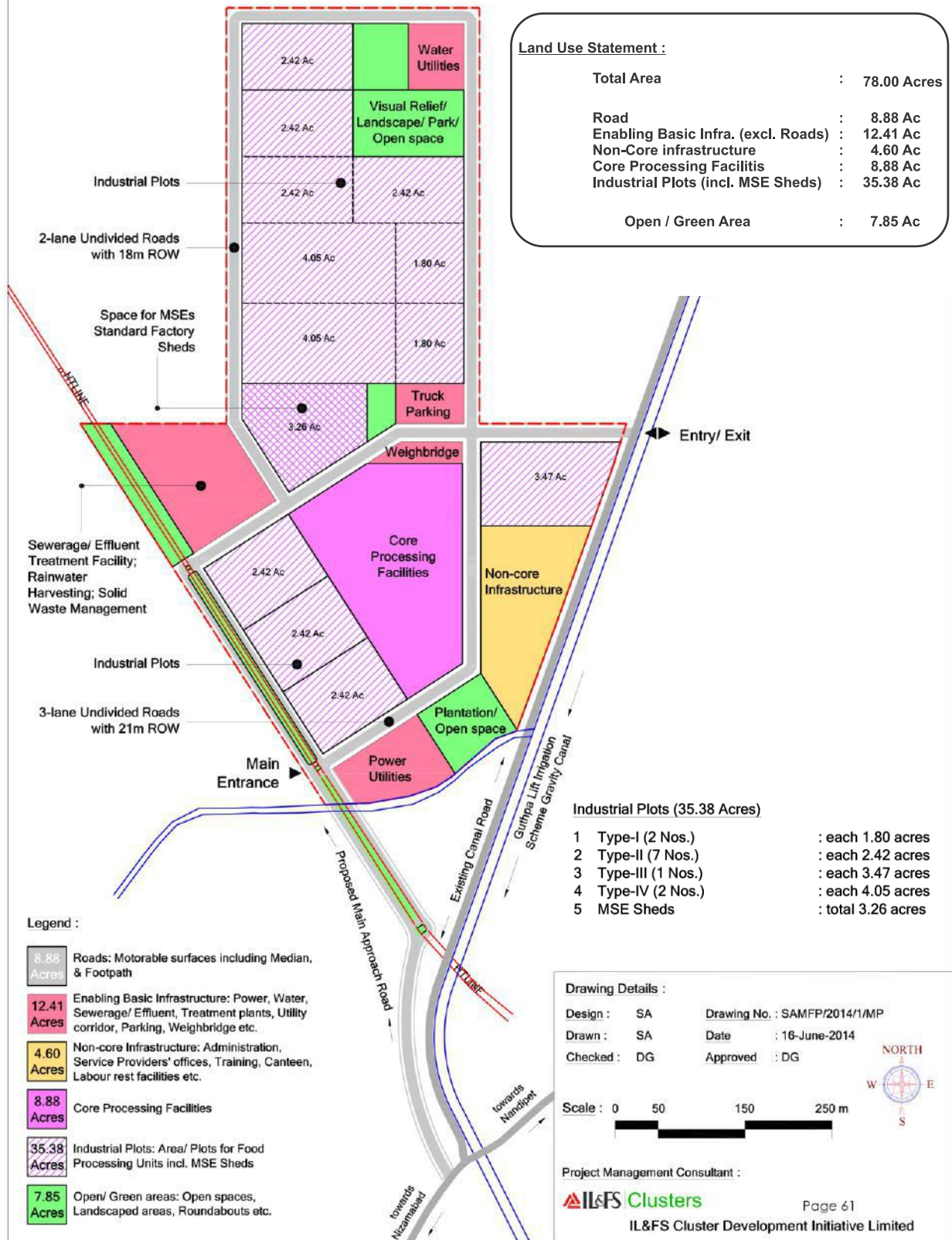


## Smart Agro Industries Corporation: The one of its kind, unparalleled, mega, integrated green field paradise for the Food Processing Industry

- › Ideally located in large acreage of contiguous land of about 400 acres dedicated to the food processing industry
- › The Special Industrial Zone is located in the Nizamabad district of Telangana (about 2 hours from Hyderabad), in the Godavari basin bordering Maharashtra and Karnataka.
- › 78 acres of this massive complex will host the Smart Agro Food Park
- › Smart Agro Food Park (SAFP) is a Mega Food Park project being developed by Smart Agro Industries Corporation to provide a platform for integration to stakeholders in food processing industries. It aims to minimize the hurdles faced by the stakeholders by providing ready-to-use infrastructure and assistance to farmers and industries for optimum utilization of resources at optimal cost.
- › SAFP is being developed under the aegis of the Government of India's **Ministry of Food Processing Industries**, project appraised by **NABARD**, supported by the **Telangana State Industrial Infrastructure Corporation**, Financed by **Vijaya Bank** and designed by **IL&FS Cluster Development Initiative**.



# MASTER PLAN





## Smart Agro Food Park: The smart package


- › Developed Industrial Infrastructure, ready to use Industrial space with captive power.
- › Backward Integration - Abundant availability and connect for raw materials, livestock and manpower .
- › Nearness to markets - more than 15 Tier 2 cities in Telangana, Karnataka and Maharashtra are within a radius of 250 kms
- › Specialized logistic support, upcoming INLAND PORT in vicinity, reefer vans services to major markets. Few minutes Access to NH7, NH16, NH222 for overnight servicing central western and southern markets.
- › Financial assistance from NABARD and Vijaya Bank at attractive interest rates
- › Adjoining a large inhabited place with all basic & essential amenities.
- › Inhouse technical assistance from competent and renowned agency

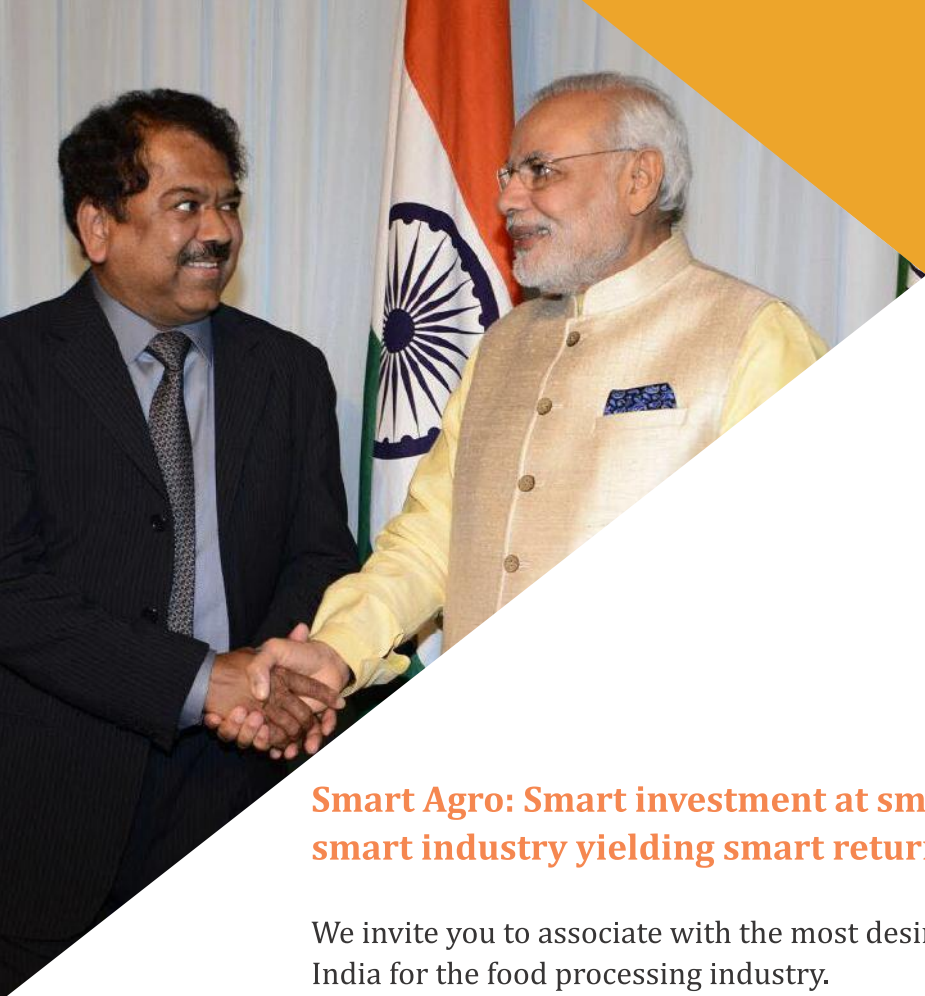
## Infrastructural Benefits at Smart Agro :

Food Park supported by three Primary Processing Centres, one each at Nalgonda, Medak and Medchal

Standard design factory sheds for MSME to PLUG & PLAY

## Key ready-to-use infrastructure includes:

- › Multi-commodity Cold Storage
  - › Individual Quick Freeze Units
  - › Deep-Freeze Storage
  - › Warehouses (Dry, Raw Material, Finished Goods, etc.) Silos
  - › Research, Development, Quality Control & Food-Testing Laboratory
  - › Ripening Chamber
  - › Manual Sorting & Grading Yard
  - › Milk Chilling Units
  - › Reefer vehicles
  - › Standard equipped Factory sheds
  - › Turmeric processing unit
  - › captive power – 15 mw
  - › Power distribution - HT connection Layout
  - › Water distribution and availability
  - › Sewage collection
  - › Effluent treatment plant
- 



## **Smart Agro: Smart investment at smart location for smart industry yielding smart returns**

We invite you to associate with the most desirable project site in South India for the food processing industry.

Smart Agro Food Park and Smart Agro Industries Corporation are the Pride and Prestige of Telangana.

### **Key sectors that stand to benefit the most**

- › Curcumin extraction from high curcumin yield turmeric grown in Nizamabad.
- › Turmeric, Chilli and other spices production
- › Corn processing - starch, cereal breakfast-corn flakes, and other products
- › Fruit pulp processing – Mangoes, Tomato, Custard Apple highly grown.
- › Highly productive Solvent extraction and edible oil refining from locally produced seeds soya, sunflower, sesame, safflower, cottonseed, rice bran.
- › Vermicelli, Noodles, Pasta and other health foods from pulses and Millets grown in region.
- › Namkeen, Bakery and other Snacks.
- › Milk processing – Cheese, butter, whey powder etc.
- › Frozen food
- › Food ingredient paste
- › Meat Processing
- › Warehousing
- › Table spreads
- › Dehydrated vegetable soup and other ready to eat meals.

## Financial advantages to industry include:

- › VAT reimbursement
- › Income tax exemption
- › Excise exemption
- › Power discounts
- › Investment subsidies
- › Interest subsidies
- › Skill development & training expenditure reimbursement
- › Quality certifications and patent registrations expenditure subsidies
- › Various other applicable subsidies from the Government of Telangana

## Operational Benefits

- › Raw material: Abundance of corn, paddy & rice bran, sunflower, safflower, sesame, soya, cottonseed, tomato, mango, custard apple, milk, pulses, millets and livestock.
- › Ready-to-use food processing infrastructure
- › Enabling infrastructure suitable for large industrial layouts (roads, power, effluent & water treatment, drains, etc.)
- › More than 15 large feeder markets of Maharashtra, Karnataka and Telangana in 250 km radius.
- › Close to NH 7, NH16 and NH222 enabling overnight reach to west central and south India.
- › Next to inhibited place with access to established basic facilities for social needs.
- › Access to a large pool of skilled and unskilled human resources
- › Logistical support – Upcoming inland port in vicinity, Logistic hub at site.
- › Warehousing & other storage facilities
- › Easy accessibility to end consumers
- › Customizable infrastructure
- › Financial assistance from NABARD and Vijaya Bank at attractive interest
- › Incentives under MOFPI scheme





## Project Champions and Developers

### ***Dr. P. Malla Reddy***

A pharmaceutical industry veteran, Mr. Reddy has business interests in over 13 countries. He is based out of New York, USA.

### ***Dr. P. Mohan Reddy***

An experienced IT professional, Mr. Reddy has over two decades of entrepreneurship experience. He has successful ventures in Pharma and IT in India and USA. He is based at New Jersey, USA.

### ***Shri. Kishore K. Ganji***

An engineer, serial investor and entrepreneur, Mr. Kishore Ganji owns several IT companies as well as Zip.in, one of the leading online grocery stores.

### ***Shri. Ramesh Kumar Kambam***

A Post graduate in business administration and has been working in the agro based industries for last 20 years. He has gained expertise in software solutions for agribusiness and food processing including supply chain related IT solutions

### ***M/s. Dodla Dairy***

Dodla Dairy is a Hyderabad-based public limited company established in 1998. It is one of the largest dairy companies in the country.

### ***Project benefactor and guide:***

Ministry of Food Processing Industries (MOFPI), Government of India

### ***Project appraiser:***

National Bank for Agriculture and Rural Development (NABARD), Government of India

### ***Project Financer :***

Vijaya Bank

### ***Project partner:***

Telangana State Industrial Infrastructure Corporation (TSIIC), Government of Telangana

### ***Project designer:***

IL&FS Group's IL&FS Cluster Development Initiative Ltd.


## SMART AGRO INDUSTRIES CORPORATION & SMART AGRO FOOD PARK

### **Head Office:**

H. No. 8-2-595/3/9A & B, Eden Garden, Road No. 1  
Banjara Hills, Hyderabad - 500034

### **Site Office:**

Smart Agro Food Park, Nandipet  
Nizamabad - 503212

 040-23357474

 [www.smartagrofoodpark.com](http://www.smartagrofoodpark.com)  [info@smartagrofoodpark.com](mailto:info@smartagrofoodpark.com)