

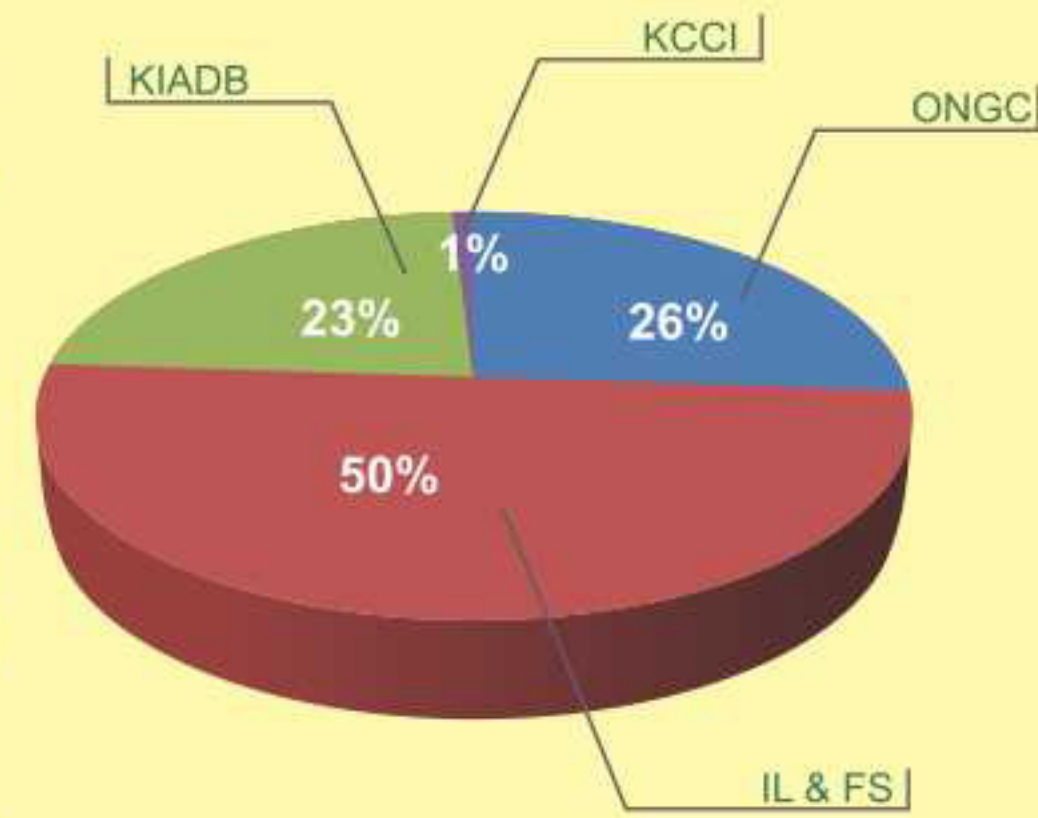
About Mangalore SEZ

Mangalore SEZ has a non-government company structure and is a unique combination of Central & State Government entities, Financial institution and Industry body.

Promoters Advantage

Promoters

- Oil & Natural Gas Corporation (ONGC): Largest PSU, Fortune 500 Company (also anchor tenant thru' OMPL)
- Karnataka Industrial Areas Development Board (KIADB): a Govt. of Karnataka entity.
- Infrastructure Leasing and Financial Services (IL&FS): Leading financial institution & infrastructure developer.
- Kanara Chamber of Commerce & Industry (KCCI): apex local industry body



Mangalore SEZ Limited

How can MSEZ be your gateway to Global & Indian Markets?



SEZ units provide the flexibility of catering to global and Indian markets as long as Net Foreign Exchange (NFE) positive criteria is met - over five years.

SEZ Benefits

- Your venture will be exempted from industrial licensing norms
 - 100% FDI in manufacturing permitted
 - Free to retain entire FE earnings
- Your unit will enjoy 'public utility services' status
- Your unit will be able to do self certification of import and export transactions and more...

Some other benefits that your unit in the SEZ will enjoy that units outside an SEZ will not have...

Fiscal Benefits

On Capital Goods, Components, Consumables, Raw Materials & Spares

- Duty free Imports / Domestic procurement of Goods
- Exemption of Excise Duty
- Exemption by way of Refund of Sales Tax / VAT
- Exemption / Refund of Service Tax
- Exemption of Purchase Tax

On Other Transactions

- 50% Exemption of Stamp duty & Registration Fees
- 50% Exemption of Stamp duty on Mortgages
- Exemption of Electricity Duty and Taxes
- Domestic Sales - Subject to NFE Conditions
- Income Tax Exemption over 15 years:
 - 100% for first five years
 - 50% for next five years
 - 50% of ploughed back export profit for next five years
- Liberal Labour Laws

Development Stage

Operation Stage

| | | |
|--|---|---|
| Duty free Imports / Domestic procurement of Goods | ✓ | ✓ |
| Exemption of Excise Duty | ✓ | ✓ |
| Exemption by way of Refund of Sales Tax / VAT | ✓ | ✓ |
| Exemption / Refund of Service Tax | ✓ | ✓ |
| Exemption of Purchase Tax | ✓ | ✓ |
| 50% Exemption of Stamp duty & Registration Fees | ✓ | ✓ |
| 50% Exemption of Stamp duty on Mortgages | ✓ | ✓ |
| Exemption of Electricity Duty and Taxes | ✓ | ✓ |
| Domestic Sales - Subject to NFE Conditions | ☒ | ✓ |
| Income Tax Exemption over 15 years: | ☒ | ✓ |
| - 100% for first five years | | |
| - 50% for next five years | | |
| - 50% of ploughed back export profit for next five years | | |
| Liberal Labour Laws | ✓ | ✓ |

To find out more about how your project can get a head-start, contact us with a brief profile of your project...

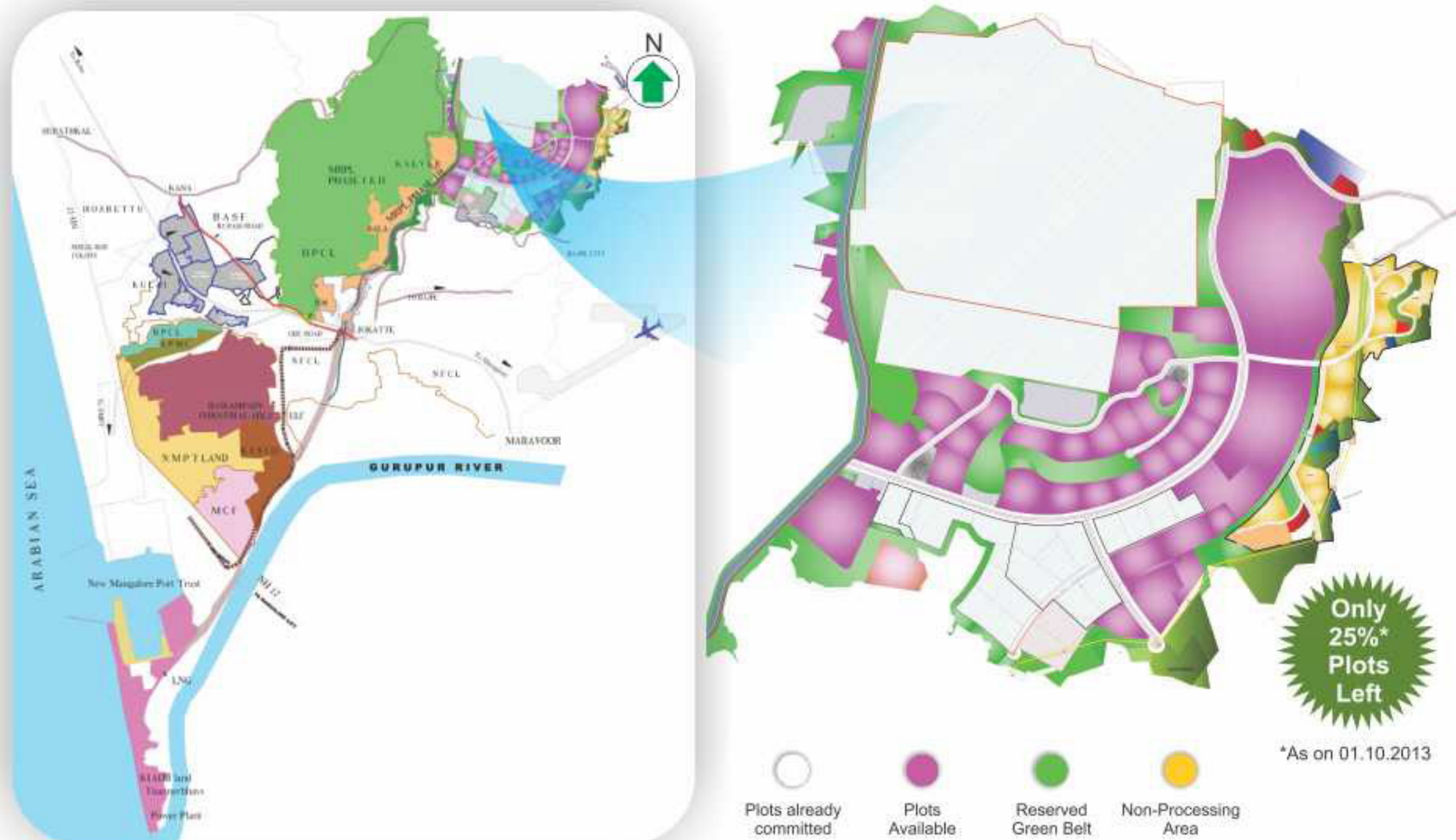


Mangalore SEZ Limited
Your Gateway to Global & Indian Markets

3rd Floor, MUDA Building, Urwa Stores,
Mangalore - 575 006, Karnataka, India.
Tel: +91 824 2452748 Fax: +91 824 2452749

Corporate Office:
No.16, Pranava Park, 3rd Floor, Infantry Road,
Bengaluru - 560 001, Karnataka, India. Tel: +91 80 22867552/3
E-mail: mindsightconsulting@gmail.com, info@msezl.com
www.mangaloresez.com

MSEZ Phase I Layout & Development Programme



Mangalore SEZ Limited
Your Gateway to Global & Indian Markets

MULTI-PRODUCT
SPECIAL ECONOMIC ZONE

- Proximity to a Cosmopolitan Urban City
- Feedstock Epicentre
- Petrochem Supportive Design
- 'Quick Start' Advantage with Supportive Infrastructure

Plus all SEZ Benefits

Urban Beach City

Advantage Mangalore



- Uncongested evergreen urban beach city
- Industrial capital of Karnataka
- Next IT destination in Karnataka after Bangalore
- International airport 5km from SEZ
- All weather, 15M deep draft Sea-Port
- Developed educational infrastructure
- Excellent residential accommodation
- Exciting recreational facilities
- Untapped manpower pool



Be in a Feedstock Epicentre

Feedstock Advantage

- **Proximity to Integrated MRPL Refinery:**
MRPL, abutting the SEZ, is currently upgrading / expanding its refinery from 12 MMTPA to 15 MMTPA
- **Large Aromatic Complex within the SEZ:**
OMPL, a joint venture between ONGC & MRPL, is setting up an aromatic complex for Paraxylene & Benzene. Production likely to commence in 2013
- **PTA and PET:**
Large Capacity PTA and PET plants coming up within the SEZ
- **Polypropylene (PP):**
Large project under implementation in vicinity
- **Proximity to Feedstock from Gulf:**
Advantage in importing duty-free feedstock from Gulf-Mangalore is the closest, congestion-free port in India, with logistical cost advantage



Mangalore SEZ Limited
Your Gateway to Global & Indian Markets

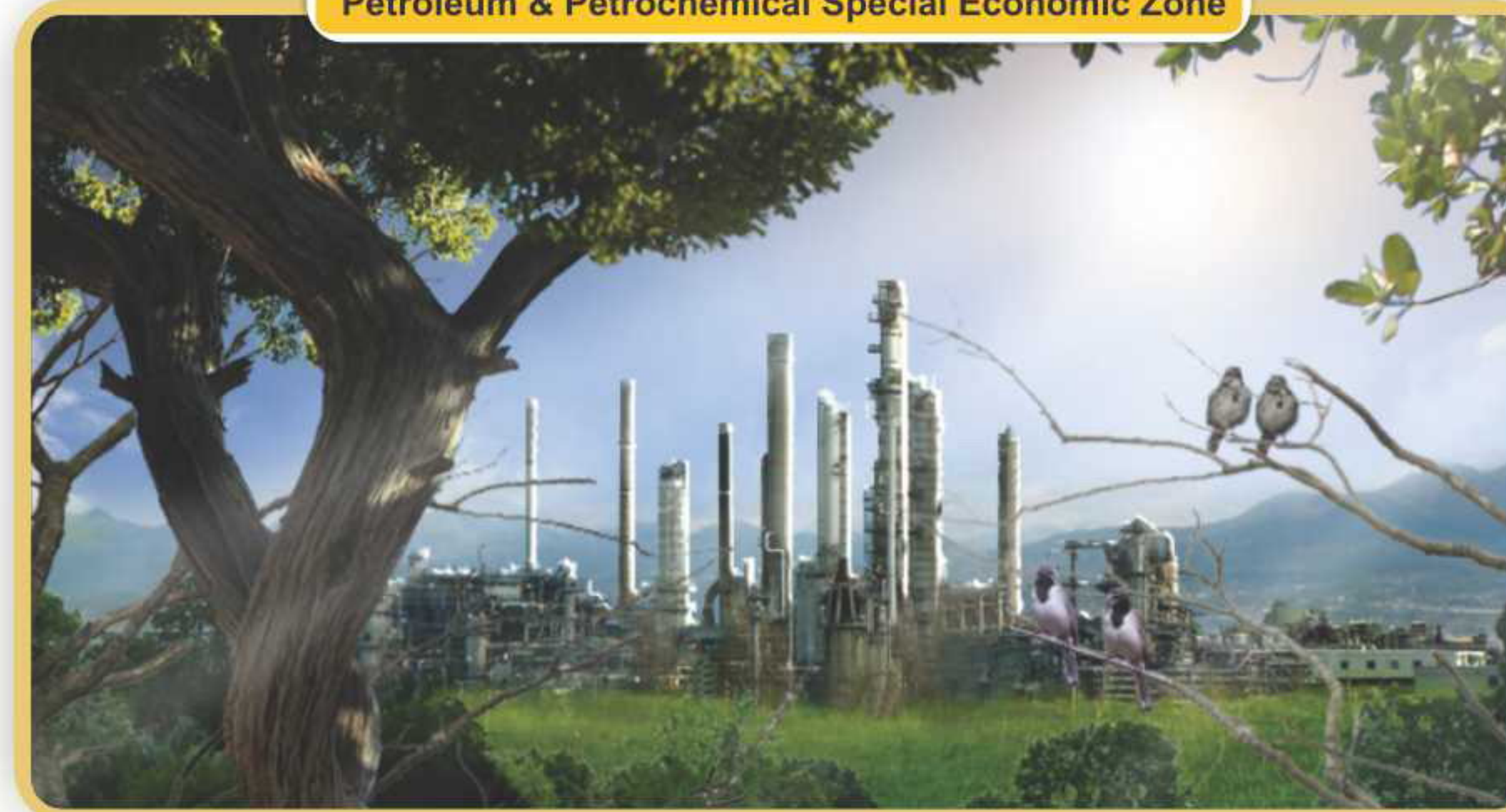
The Mangalore SEZ Phase 1 is a Special Economic Zone focused on promoting Petroleum & Petrochemical and Chemical Industries.

Situated in the well developed urban international port city of Mangalore, it is spread over 1800 acres of already acquired land.

Mangalore SEZ not only is a 'Notified' Sector Specific SEZ, but also has the Environmental Clearance from Ministry of Environment & Forests as well as CFE from Karnataka State Pollution Control Board. Most recently, it has been accorded "Multi Product" SEZ status.

So if you are looking for a huge head start to other location options Checkout Mangalore SEZ.

Petroleum & Petrochemical Special Economic Zone

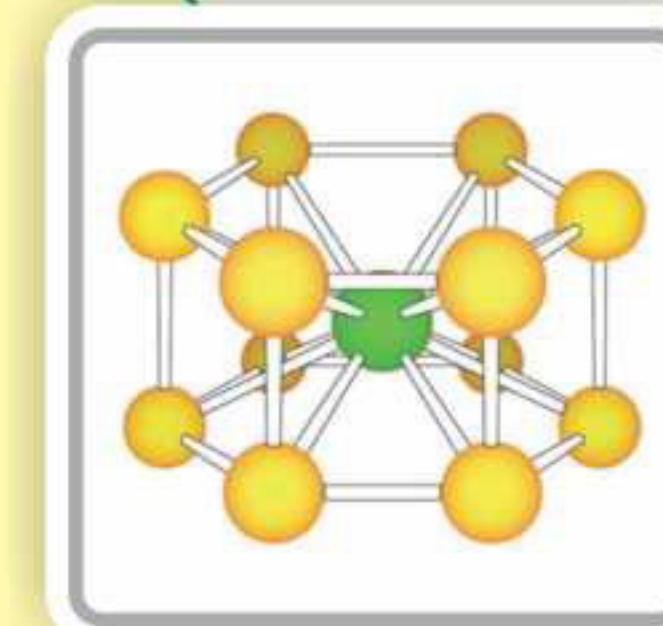


Petrochem Supportive Design

WITH **SPA** Special Petrochemical Advantage

Advantage of Petrochemical Cluster

Being developed as a Cluster encouraging growth of mutually supportive units usually involving upstream & downstream linkages, providing internal markets, internal raw material sources etc.



'Quick Start' Advantage for your Project

'Quick start' Advantage

- Ready to occupy graded plots
- Flexible plot sizes (catering to SME's)
- Roads
- CETP
- Abundant Water
- Adequate Power
- Effluent discharge, collection & disposal system
- Storm water drainage system
- Solid waste management system

at battery limit



Support Facilities Advantage

- (Proposed through concessionaires)
- Centralised Process Utility Services
- Tank farm & warehouse
- Logistics services



Common Shared Facilities

- Dedicated pipeline-cum-road corridor
- Water treatment plant
- Fire water storage and distribution system
- Treated effluent disposal to sea
- 220 KV sub – station in close proximity
- Telecommunication & Surveillance system
- Green Belt
- Proposed self-contained, Integrated Township with residential and commercial facilities, supported by social infrastructure



Excellent Global & Domestic Connectivity

- Excellent road connectivity thru' 3 National Highways and large number of State Highways
- Rail connectivity thru' Southern and Konkan Railway network
- Just 8km away from all weather, International 15m deep draft port
- International airport 5 km from SEZ

Dedicated Pipeline & Road Corridor to Port



'Plant to Port to Plant' in minutes

A dedicated pipeline-cum-road corridor bridges the short 8 km distance between New Mangalore International Port with the Mangalore SEZ.

This ensures that material is moved in minutes between the Port & SEZ units.

